

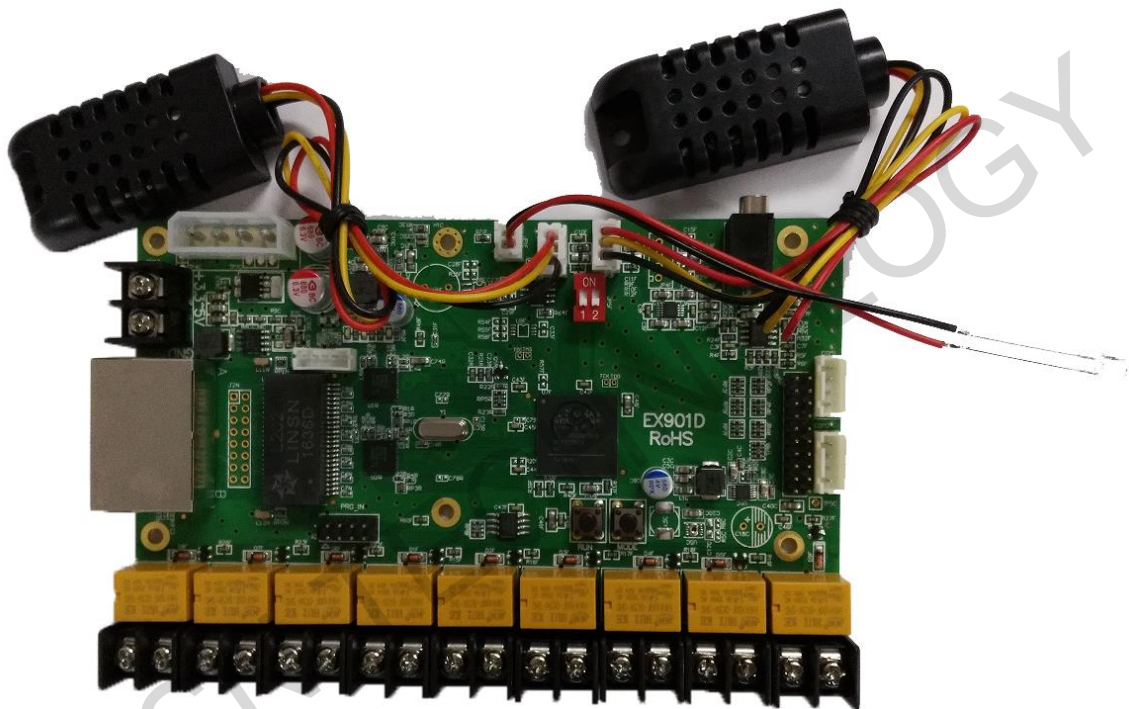
Multifunction Board

EX902D

V1.2

Jan 2018

1. Features



- 1) One audio output;
- 2) Two temperature/humidity detection modules to detect the temperature/humidity inside and outside the cabinets separately;
- 3) One light sensor for auto-adjusting brightness;
- 4) Three relays for powering on/off, three relays for

Official website: www.linsn.com

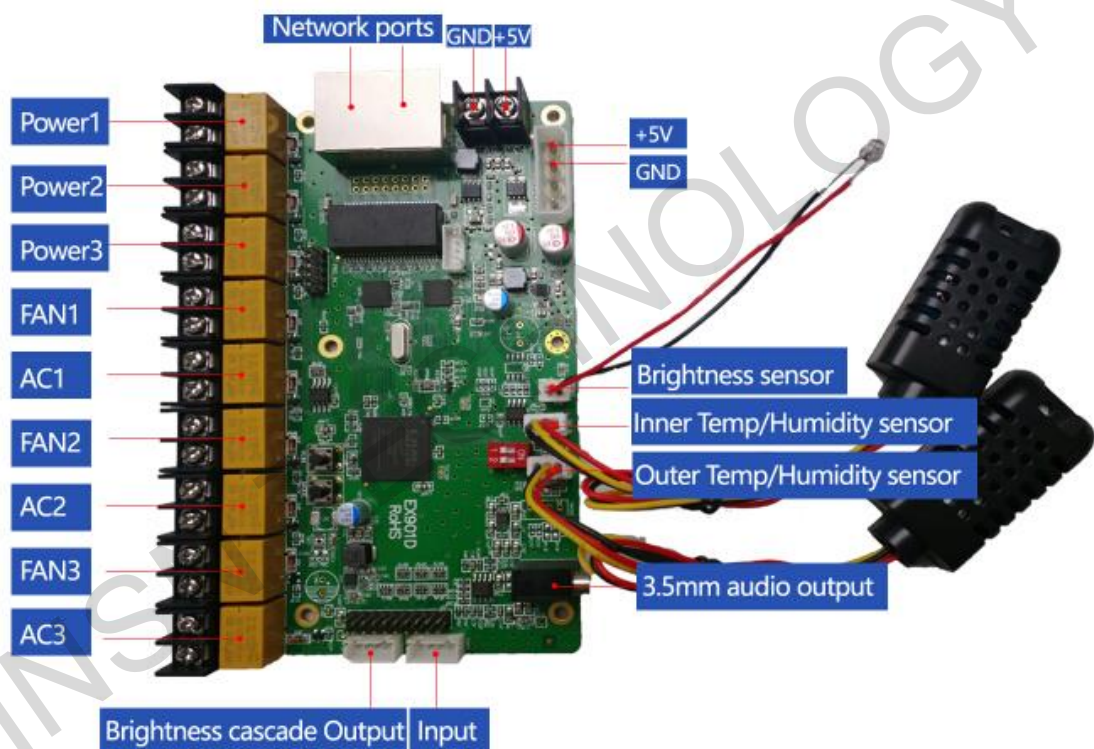
Add: Floor 15&16, Jiajiahao Business Building, No. 10168, Shennan Blvd,
Nanshan District, Shenzhen

Tel: +86-0755-86183590/ 4008836968

opening/closing fans, and three relays for opening/closing ACs;

- 5) Timing function, can be used as a timer or delayer;
- 6) Supports cascade function.

2.Interface instruction



Note: There are two power supply ports, and please just use one of those.

3.Usage

1) Connection

Official website: www.linsn.com

Add: Floor 15&16, Jiajiahao Business Building, No. 10168, Shennan Blvd,
Nanshan District, Shenzhen

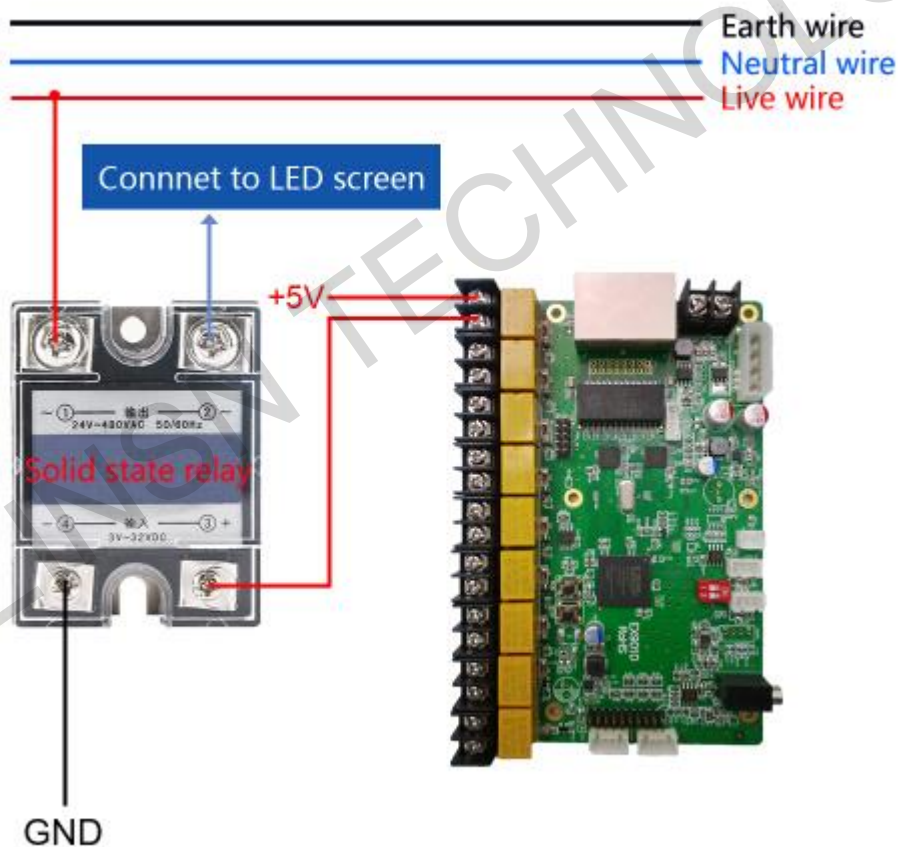
Tel: +86-0755-86183590/ 4008836968

Place EX902D between the sending card and the first receiving card (usually near the LED screen side, or depends on the user).

2) Controlling power supply of the screen remotely

Power1, Power2, Power3 on/off control by sending card

FAN, AC on/off control (check the picture below for connecting the multifunction board as reference; the first picture shows connection to **solid state relay**, the second picture shows connection to **AC contactor**).



Official website: www.linsn.com

Add: Floor 15&16, Jiajahao Business Building, No. 10168, Shennan Blvd,
Nanshan District, Shenzhen

Tel: +86-0755-86183590/ 4008836968



3) Temperature/humidity inside or outside the cabinets

Place the Temperature/humidity sensor in a proper place
(extend the cable accordingly),

LedSet/LEDStudio(LEDStudioV12.60 or earlier) will fetch
and show the data value from the sensor on LED Screen.

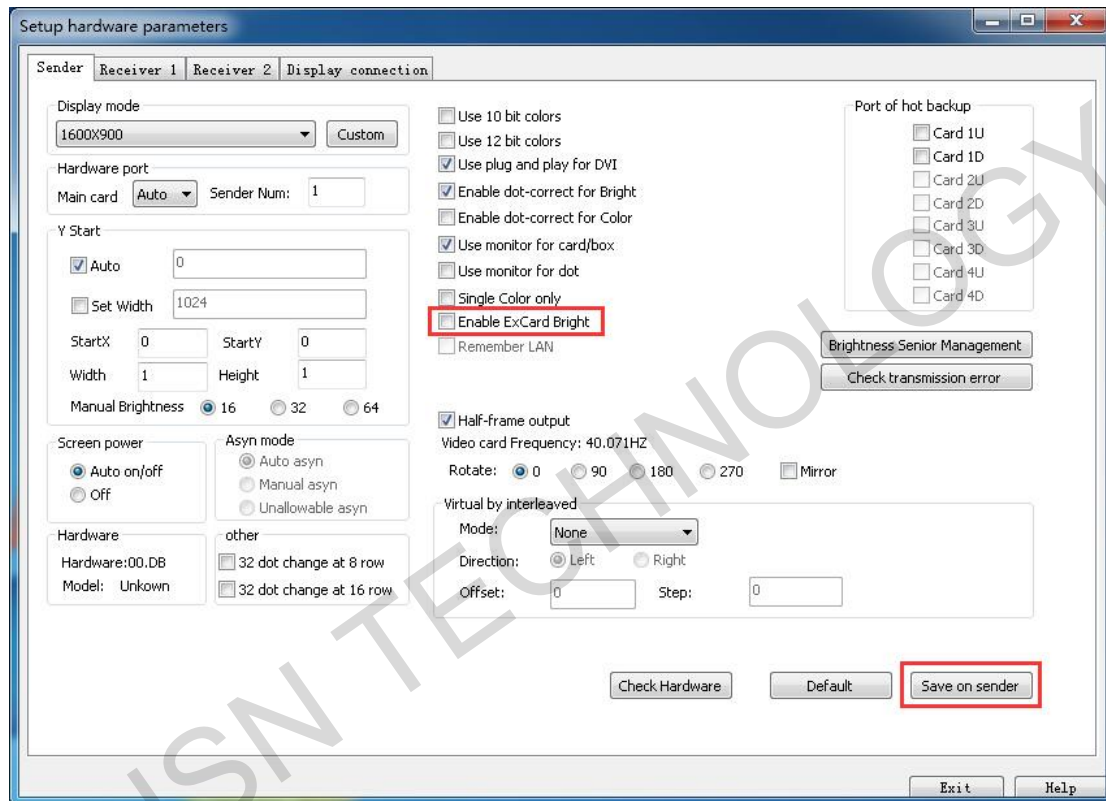
4) Brightness auto-adjustment

Official website: www.linsn.com

Add: Floor 15&16, Jiajiahao Business Building, No. 10168, Shennan Blvd,
Nanshan District, Shenzhen

Tel: +86-0755-86183590/ 4008836968

Place the Temperature/humidity sensor in a proper place (extend the cable accordingly); check **Enable ExCard Bright** option for multifunction board in Ledset/LedStudio12.60(or earlier) to realize the brightness auto-adjustment function.



5) Audio transmission

Input Audio data to 3.5mm audio jack on Sending card; the audio data will be transmitted to multifunction board via RJ45 cable, then separate the Audio data and output from 3.5mm audio jack on multifunction board.

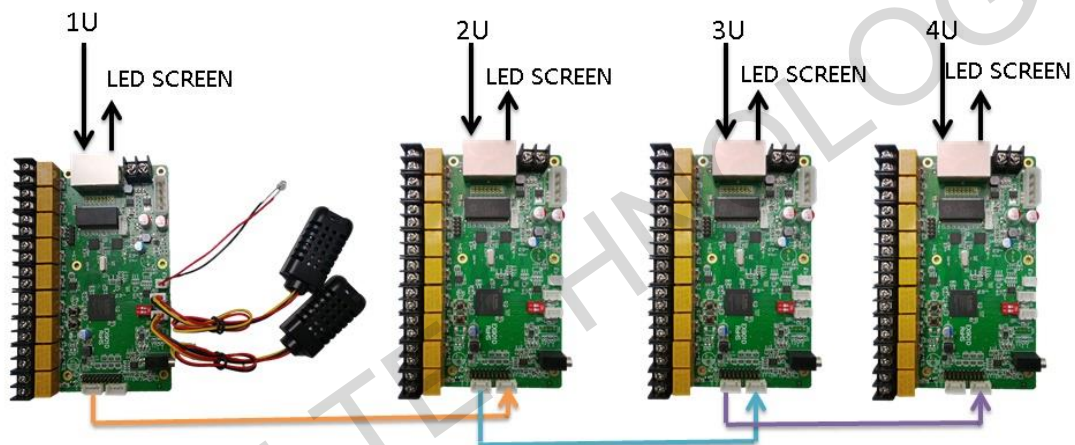
Official website: www.linsn.com

Add: Floor 15&16, Jiajiahao Business Building, No. 10168, Shennan Blvd,
Nanshan District, Shenzhen

Tel: +86-0755-86183590/ 4008836968

6) EX902D Cascade Mode

When you use several sending cards cascaded for one screen, you also need to connect the multifunction boards in cascade if you are using multifunction board. For 4-multifunction-board cascade, please do the connection as follows (by using the connectors below, you don't need to change the dip switches).

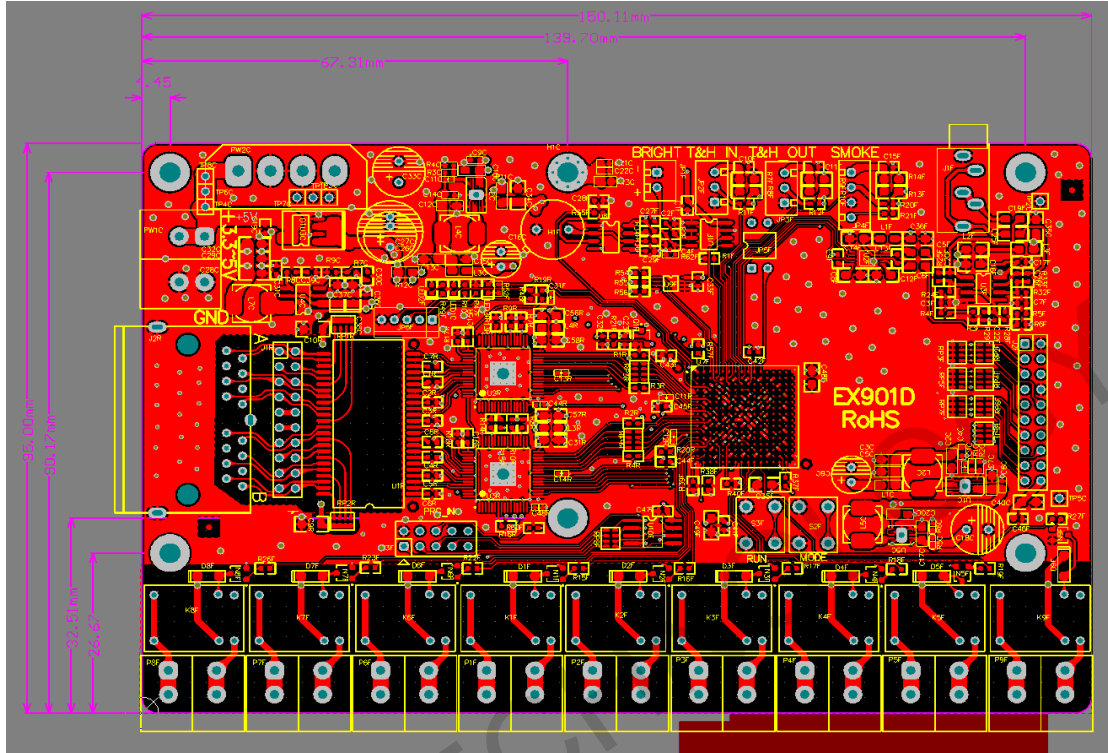


Official website: www.linsn.com

Add: Floor 15&16, Jiajahao Business Building, No. 10168, Shennan Blvd,
Nanshan District, Shenzhen

Tel: +86-0755-86183590/ 4008836968

4. Installation hole position and dimension



Official website: www.linsn.com

Add: Floor 15&16, Jiajiahao Business Building, No. 10168, Shennan Blvd,
Nanshan District, Shenzhen

Tel: +86-0755-86183590/ 4008836968

5.Specifications

Rated Voltage (V)	5	Maximum value	5.5	Minimum value	4.5
Rated Current (A)	0.40	Maximum value	0.45	Minimum value	0.35
Rated power consumption (W)	2.0	Maximum value	2.5	Minimum value	1.6
Environment Temperature (°C)	-20°C ~ 75°C				
Environment Humidity (%)	0% ~ 95%				

END

Official website: www.linsn.com

Add: Floor 15&16, Jiajahao Business Building, No. 10168, Shennan Blvd,
Nanshan District, Shenzhen

Tel: +86-0755-86183590/ 4008836968